

# Anaesthetic Agent / Carbon Dioxide Absorbent

## AMSORB™ Unique Carbon Dioxide Absorbent

Armstrong Medical's Amsorb™ provides a unique alternative to conventional carbon dioxide (CO<sub>2</sub>) absorbents such as sodalime or Baralyme. Composed of a calcium hydroxide-based absorbent with an inert hardening agent, Amsorb™ conforms to BP and USP requirements for medical carbon dioxide absorbents.

### KEY BENEFITS:

- Does not generate Compound 'A' when used with Sevoflurane™
- Does not generate Carbon Monoxide under any clinical conditions
- Low dust levels
- Non-corrosive to skin
- Retains its colour change (white to violet) when granules are exhausted

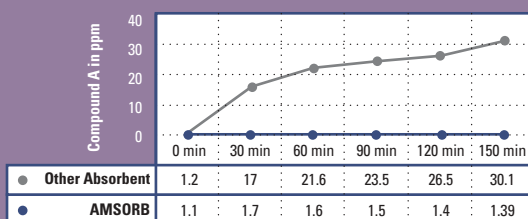
## AMSORB™ CARBON DIOXIDE ABSORBENT

Twin Pack (2 x 4.5 kg)..... **AMAB2000**

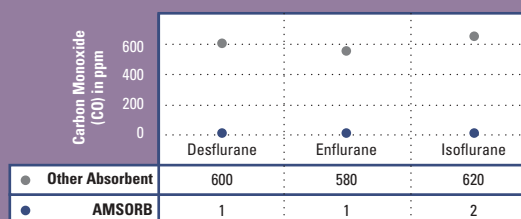


**AMAB2000**

**Generation of Compound A**  
(when used with Sevoflurane™)



**Generation of Carbon Monoxide**  
(in the presence of dried soda lime)



**NOTE:** For a complete Clinical Reference Bibliography for AMSORB®, contact Benson Medical

## CHEMOSORB SODALIME Carbon Dioxide Absorbent

Sodalime consists of hydrated lime with small amounts of sodium hydroxide that produces a natural mineral with a maximum absorptive capacity for carbon dioxide gases.

### FEATURES

- Pink to white colour change
- Odourless, resistant to erosion
- Substantially dust free, and non-caking
- Conforms to USP 1980 and BP1980
- Cost effective

## CHEMOSORB Sodalime Carbon Dioxide Absorbent

Twin Pack (2 x 4.5 kg.) ..... **10215**



**10215**

## HALOTHANE B.P.

Prescribed for induction and maintenance of general anaesthesia, our Halothane inhalation anaesthetic agent is manufactured by Halocarbon Laboratories Inc.

**Halothane** (per 250ml bottle or case of 12) ..... **11990**

## ISOFLURANE

The most widely used inhalation anaesthetic in North America. The least soluble in blood and tissue of the potent inhaled agents for rapid uptake, precise control of depth, and prompt recovery.

**Isoflurane** (per 250ml bottle or case of 6) ..... **11890**



**11990**