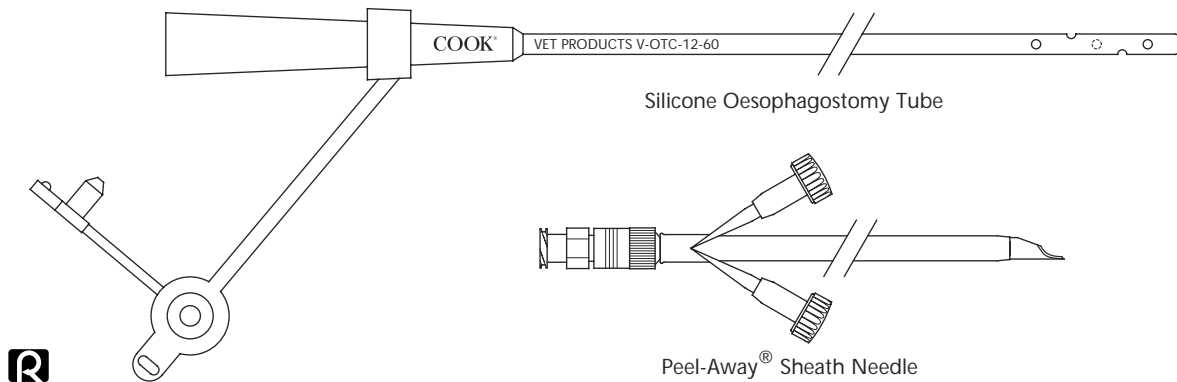


Oesophagostomy Tube Catheter Set

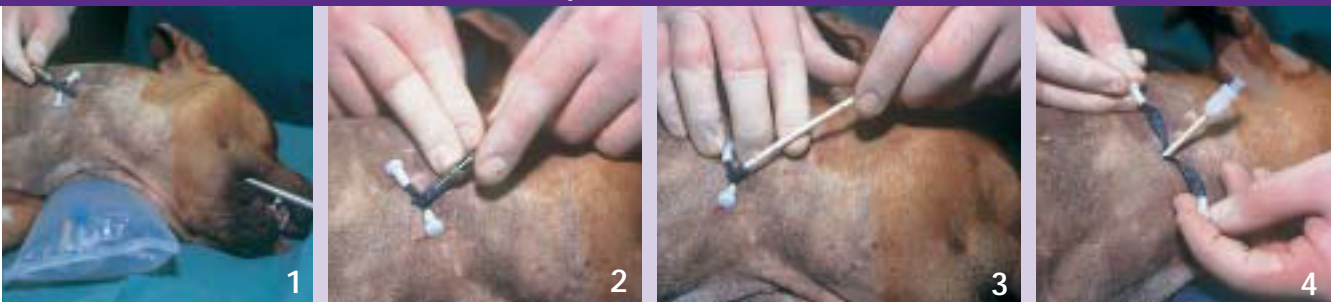


DESCRIPTION

- An open-end silicone catheter with multiple sideholes used for the administration of enteral feeding solutions.
- Catheter introduced after percutaneous puncture of the upper oesophagus with the supplied Peel-Away® sheath.
- Accurate positioning of the Peel-Away® sheath needle is aided with use of the available introduction tube.
- Intended for VETERINARY USE ONLY.

ORDER No.	Remarks
V-OTCS-1200	Set consists of a 12 French silicone catheter, 60cm length with 8 gauge, 7.0cm length Peel-Away® sheath needle. Three sheaths supplied.
V-OTCS-1400	Set consists of a 14 French silicone catheter, 60cm length with 7 gauge, 7.0cm length Peel-Away® sheath needle. Three sheaths supplied.
V-OTC-12-60	Silicone oesophagostomy tube only from above set, 12 French, 60cm length. Reautoclavable.
V-OTC-14-60	Silicone oesophagostomy tube only from above set, 14 French, 60cm length. Reautoclavable.
V-SNPP-8-7.0-3	3 Peel-Away® sheath needles, 8 gauge, 7.0cm length. Three sheaths, one needle (for use with V-OTCS-1200).
V-SNPP-7-7.0-3	3 Peel-Away® sheath needles, 7 gauge, 7.0cm length. Three sheaths, one needle (for use with V-OTCS-1400).

Cook Introduction Technique



- Step 1.** Insert introduction tube via the mouth into the midcervical oesophagus and angle its bulb to tent the skin. It is easy to palpate the opening of the bulb with a finger. Make a small nick over the bulb of the tube. Insert the needle and sheath through the skin into the bulb and advance the assembly carefully.
- Step 2.** Remove the needle and grasp the Peel-Away® sheath firmly and remove introduction tube. Redirect the sheath caudally by flipping it 180°. It should now advance easily in the distal oesophagus.
- Step 3.** Insert the feeding tube into the oesophagus through the sheath.
- Step 4.** Peel the sheath away by pulling on the tags.