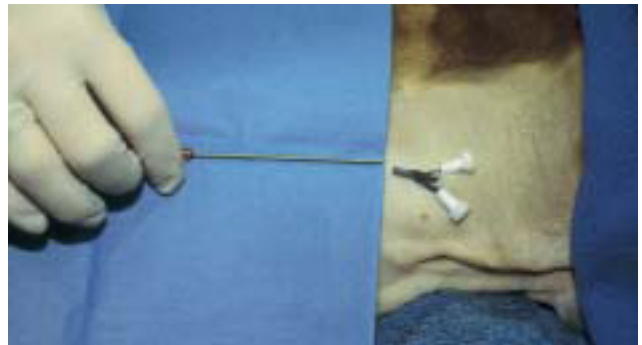


Peel-Away® Sheath Needle Technique for Introducing Catheters

- Make a small nick incision at catheter placement site.
- Before introducing the Peel-Away® sheath needle into the vessel, secure the sheath to prevent it from advancing prematurely. This can be done by holding it at the base of the sheath.
- Insert Peel-Away® sheath needle through nick incision into vessel. Advance the unit into the vessel to insure that the sheath as well as the needle is seeded properly.
- Stabilise the needle to prevent it from advancing or retracting.
- Advance the Peel-Away® sheath into the vessel by using a slight rotation, side to side, while advancing.
- The needle can then be removed from the vessel, leaving the Peel-Away® sheath as the introduction unit.
- Introduce the intravenous catheter through the Peel-Away® into the vessel. Cap and flush the intravenous catheter with heparinised saline to prevent it from clotting.
- Remove sheath by pulling the tabs up and out.
- Secure catheter to animal using sutures and apply triple antibiotic ointment at insertion site. Wrap for additional stabilisation.



Peel-Away® Technique - Step 1



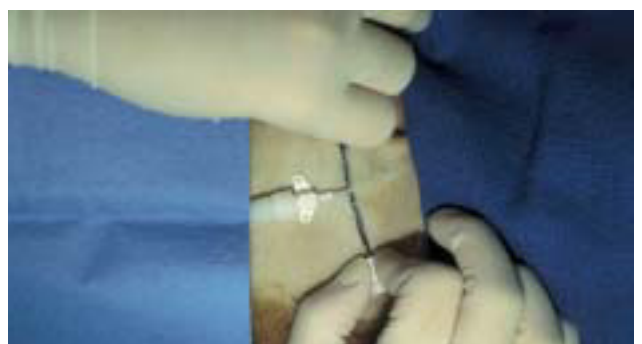
Peel-Away® Technique - Step 2



Peel-Away® Technique - Step 3



Peel-Away® Technique - Step 4



Peel-Away® Technique - Step 5