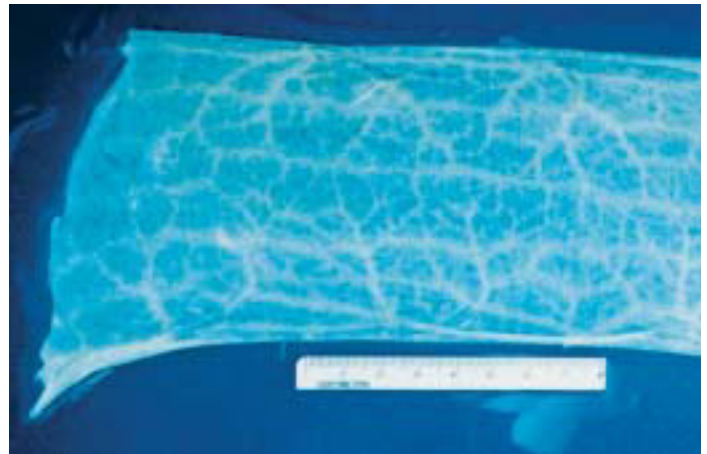


DESCRIPTION

- Used for repair and reinforcement of soft tissue.
- When rehydrated it has significant suture holding strength. Individual sheets can be rolled, folded or shaped into multiple layers for extra strength.
- Primary application is large or chronic dermal injuries where skin closure is not possible.



Hydrated Sheet

POSSIBLE APPLICATIONS

- Barrier
 - Oesophageal
 - Organ patch
 - Cleft palate
 - Corneal
 - Periodontal
 - Haemostatic plug
 - Other soft tissue repair
-
- Normal wound care procedures are recommended when using this product.
 - Derived from the submucosal layer of the porcine small intestine.
 - Processed to maintain its three-dimensional framework which provides a scaffolding for tissue ingrowth.
 - Contains natural components — collagen (Types I, III and V), fibronectin, decorin, hyaluronic acid, chondroitin sulphate A, heparan sulphate and growth factors (TGFB, bFGF).
 - Conducive to smart tissue remodelling of organ augmentation and reconstruction with reduced scar formation.
 - Absorbent and provides a protective barrier against the external environment and bacteria.
 - Reinforces wound tissue and is absorbed by the body as it is replaced by host tissue.



130X SEM Smooth Side



130X SEM Rough Side